

ATTENDANCE



AT QUEEN'S PARK, WE...

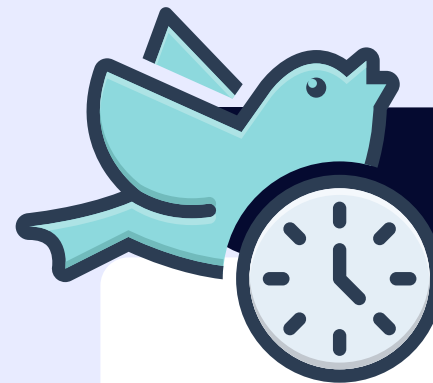
INTRODUCTION

At Queen's Park, we know that regular school attendance is essential for children to succeed socially, emotionally and academically.



WHOLE SCHOOL ATTENDANCE TARGET

96%



ON TIME...

We understand that traffic, buses and other issues can be unpredictable and may cause delays. However, we know that this should be very rare.

Everybody finds it difficult to walk into a room full of people because they are late and it means children miss vital learning right at the start of the day!



IF YOUR CHILD NEEDS TO BE OFF...

In the rare circumstance that your child is too ill to be in school, you must **call the school every day** on 01273 686822 to confirm your child's absence.

If there is planned absence e.g. for an operation, please notify the school of the date prior to the absence and then call daily to update.



HOME VISITS

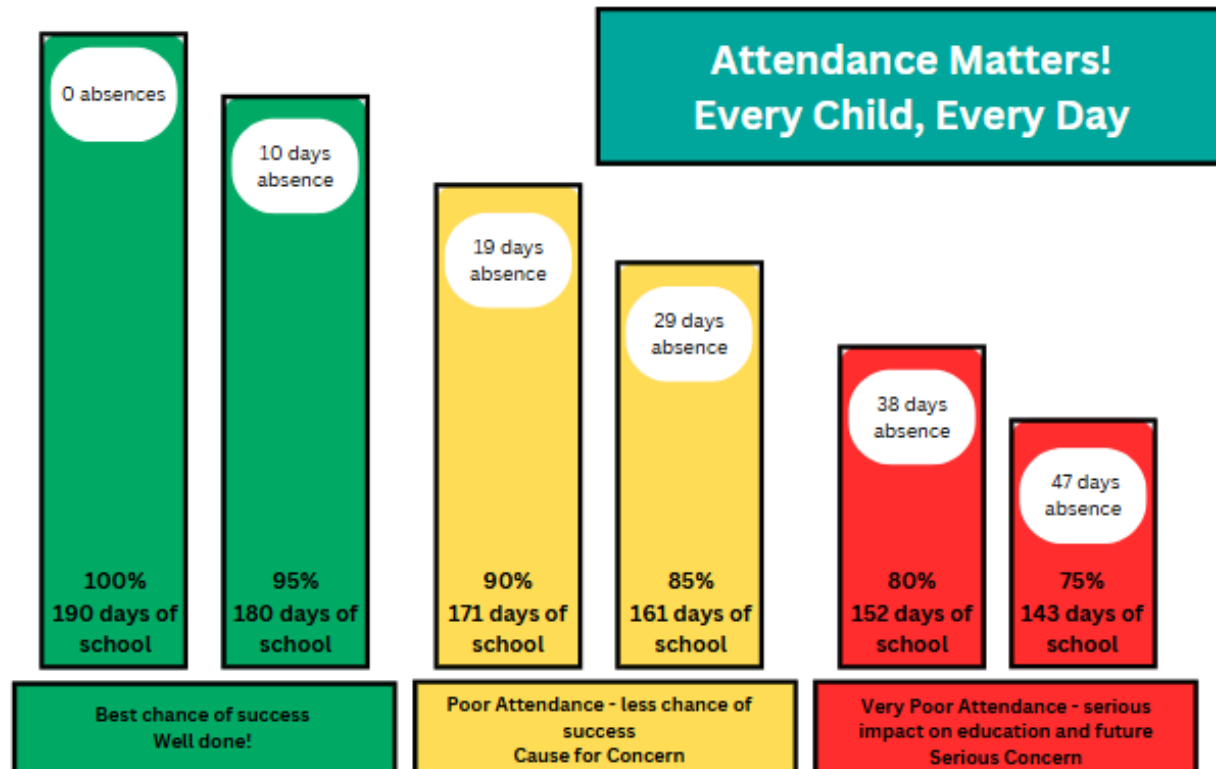
If your child does not arrive at school and we do not have any notification of where they are. We will conduct a home visit to check that you and your child are safe.

HELP

WE WANT TO HELP

At Queen's Park, we pride ourselves on our commitment to strong pastoral care. Our wonderful family champion is here to support our families with an array of topics including difficulties with regular attendance at school.

If you are struggling with your child's attendance, please come and speak to us and we will support you.



175 non school days a year!
A lot of time for shopping, holidays, appointments and anything else!



SICKNESS

We can administer medicine and will always be vigilant to children's health. We are used to children attending school with a runny nose or a mild cough and promise you that we will look after them!

We have many trained first aiders who will always call home if we think a child is too ill to be in school so **we encourage our children to try and come in.**



HOLIDAYS

We **do not** authorise holiday in term-time and, where a child is off for 5 days or more, a fine of £160 per parent, per child.

MOMENTS
MATTER,
ATTENDANCE
COUNTS.